

# The Burlington

SPECIFICATION



# The Burlington

## SPECIFICATION

### Ground Floor Dimensions

<b>Kitchen / Dining</b>	5194mm (max) x 4410mm (max)	17'0" x 14'4"
<b>Garage</b>	3098mm x 6164mm	10'1" x 20'2"
<b>WC</b>	915mm x 1847mm	3'0" x 6'0"

### First Floor Dimensions

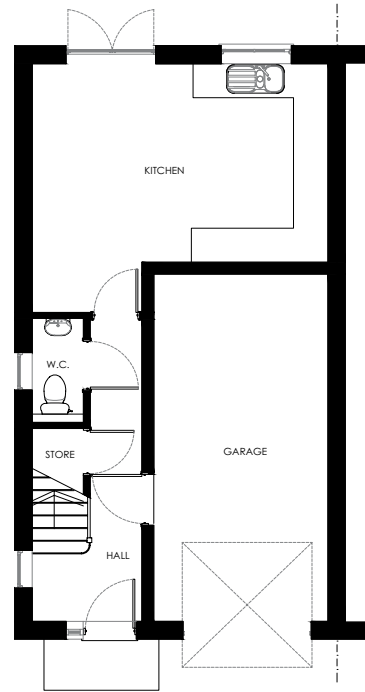
<b>Lounge</b>	5194mm (max) x 3966mm (max)	17'0" x 13'0"
<b>Bedroom 4</b>	3109mm (max) x 4444mm (max)	10'2" x 14'5"

### Second Floor Dimensions

<b>Bedroom 1</b>	4140mm (max) x 3632mm (max)	13'5" x 11'9"
<b>En-suite</b>	1905mm x 1774mm	6'2" x 5'8"
<b>Bedroom 2</b>	2429mm x 3321mm	7'9" x 10'8"
<b>Bedroom 3</b>	2675mm (max) x 3056mm (max)	8'7" x 10'0"
<b>Bathroom</b>	2238mm (max) x 1925mm (max)	7'3" x 6'3"

There are a number of optional extras available across your new Erris Home. Please discuss your requirements with our Sales Team.

*It is only possible to convey a general impression of the layouts and configuration of the property on a schematic publication of this sort. We operate a policy of continuous product development and consequently there may be material differences evident between the layout / configuration / sizes depicted and that achieved in the finished property. Please do not hesitate to speak with a member of our team to confirm the exact layout / specification / configuration during the sale period.*



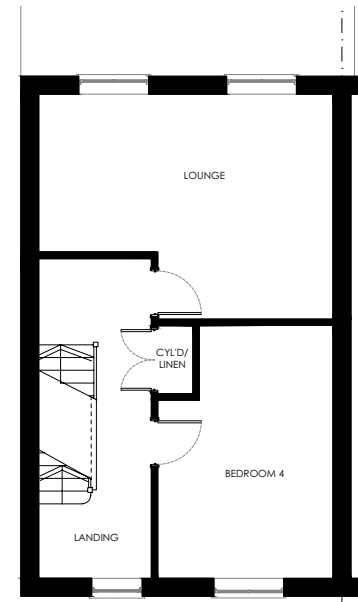
Ground Floor

### Kitchen

- Fitted Symphony 'Koncept' kitchen doors
- Premium 40mm worktop with upstand
- Stainless steel 1.5 bowl under counter and mixer tap
- Polished chrome LED down lighters
- Oven, 5 ring gas burner and 900mm chimney hood
- Integrated dishwasher, fridge / freezer

### Heating

- High efficiency Vaillant boiler
- Stelrad 'compact with style' radiators with TRV controls



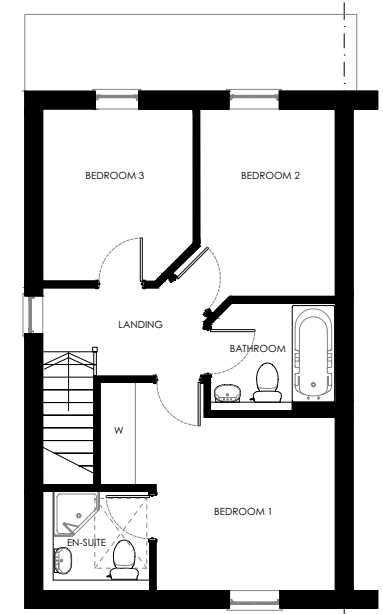
First Floor

### Bathroom & Ensuite

- Bespoke sanitaryware and taps
- Furniture to cloakroom and bathroom
- Polished chrome LED down lighters
- Half height wall tiling
- Douglas James shower pod
- Shaver / charger socket

### Communication & Networking

- Sky dish and digital aerial (pre wired)
- Cat5e cabling and future proof networking to 3 points
- Home hub
- TV point and telecoms point
- Virgin Media option



Second Floor

### Decoration

- Emulsion to walls and ceiling
- Gloss to woodwork

### Windows & Doors

- Black front door with white UPVC frame and chrome letter plate
- French doors to rear
- White grained internal doors
- Graphite coloured window frames
- Intelligent double glazing

### External Features

- Buff riven flags, paved area to rear
- Turf to front gardens
- External tap to rear
- Low maintenance soffit & fascias